

LINEAR AXES & LINEAR AXIS SYSTEMS

Standardised, adapted or customised

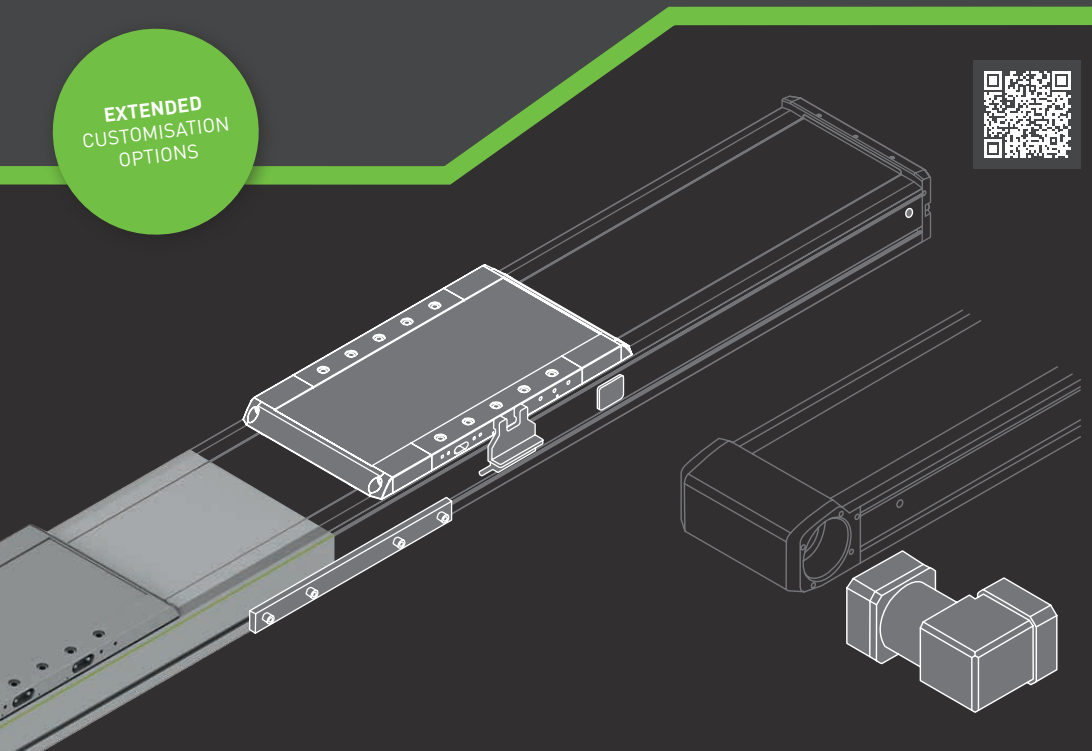
Our linear axes and linear axis systems can be adapted to your own motion tasks using the options available in our product configurator. In addition to the standard options, we can also offer

you extended customisation options as required. We will be happy to assist you. And if you still haven't found the right linear axis or linear axis system, we will work with you to find a solution!

Characteristics:

- Extended customisation options such as excess length and air purge are available from our team
- Selection between belt, shaft, rack and linear motor drives
- Fully assembled systems available
- Numerous configuration options such as cover strip, distance measuring system, drive adaptation and limit switch
- Stroke length freely selectable in millimetre steps
- Short delivery time and fast response times

EXTENDED
CUSTOMISATION
OPTIONS

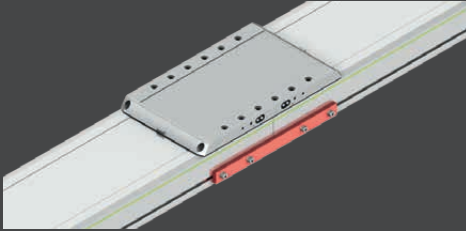


EXTENDED CUSTOMISATION OPTIONS FOR YOUR LINEAR AXES & LINEAR AXIS SYSTEMS

The customisation options for our linear axes and linear axis systems go far beyond the options available in our product configurator. We will be happy to work with you to adapt your linear axes

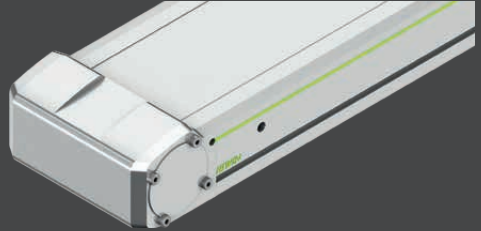
and linear axis systems in a straightforward way based on predefined and implemented customisation options, or much more extensively.

THE FOLLOWING OPTIONS ARE AVAILABLE, AMONG OTHERS:



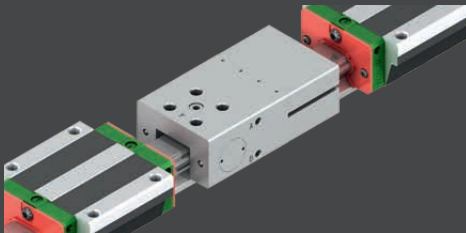
Excess length

We are happy to provide excess lengths in addition to the standard maximum stroke without complications and according to customer requirements. With butt-joined guide profiles, we go up to 16 m depending on the axis and are also happy to go to the technically feasible length of 48 m.



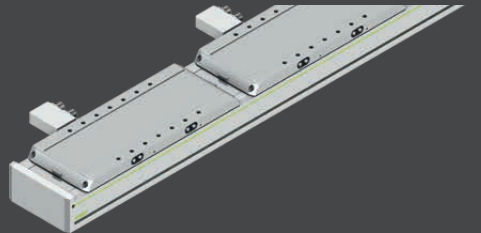
Sealing air connection

Sealing air connections in conjunction with a cover strip provide the axle with optimum protection against the ingress of dirt in environments contaminated by fine dust, fibres or other types of contamination. The holes are either drilled to your specifications or defined by us.



Brake element

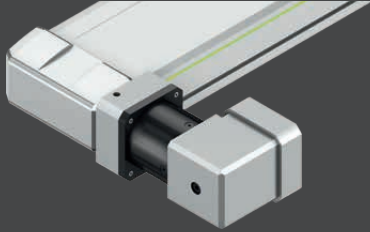
Brake elements guarantee that a position is held securely in linear motor axes or in vertical applications when this cannot be guaranteed by the drive. The brake elements used are safety components that are designed to be fail-safe so that the profile rail is clamped in the event of a pressure drop.



Additional slides

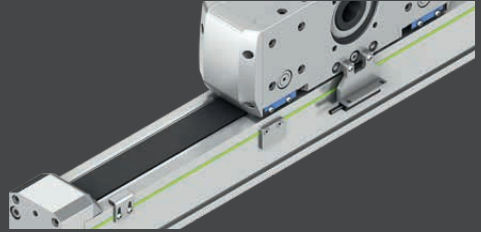
Depending on the customer application, further optional slides, a maximum of two or three slides per series, can be realised in different slide lengths. In applications with special cycle requirements, two or more slides can be useful and mandatory for linear motor axes, whereby counter-rotating movements are also possible through slides that can be moved independently of each other.

WE ARE HAPPY TO MAKE SPECIAL SOLUTIONS AVAILABLE ON REQUEST, WITHOUT ANY COMPLICATIONS



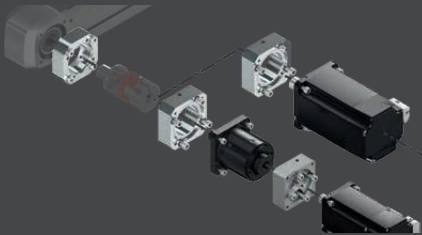
Angular gear

Due to the surrounding space conditions, it may happen that a straight motor connection is not practical. In such cases, an angular gear saves a significant amount of space, resulting in a more compact axle design.



Proximity switches

Inductive proximity switches, optionally as N/C or N/O contacts, can be used to detect the end position of an axis. The limit switch is available with a plug connector or open cable end as standard. There is also the option of a reference switch, which can be used as a trigger.



Special motor adaptation

The drive adaptation is always designed in several types to ensure easy flange-mounting of all common motors or gearboxes. We have a large database of motor adaptations from a wide range of manufacturers, which can be selected in the product configurator, and we also enable the adaptation of customer-side motors.

FURTHER CUSTOMISATION OPTIONS:

- **SHORT STROKE:** Removal of the existing reserve stroke
- **SPECIAL ENCODER:** Additional distance measuring systems available on request
- **REMOVAL OF THE TRIM STRIP:** The green trim strip can be removed on request
- **ADAPTATIONS TO THE PROFILE RAIL GUIDING:** Preload, dust protection, lubricant
- **PROFILE RAIL WITH INCREASED MOMENT STIFFNESS:** The use of linear guideways from the CG series can significantly improve moment rigidity, especially in combination with module axles.

Possible dimensions per series:

Product group	Modular axes HM		Table axes HT			Bridge axes HB			Vertical axes HC		Two-axis system	Three-axis system	Linear gantry	Double axes
	HM-B	HM-S	HT-B	HT-S	HT-L	HB-B	HB-L	HB-R	HC-B	HC-R				
Product options	HM-B	HM-S	HT-B	HT-S	HT-L	HB-B	HB-L	HB-R	HC-B	HC-R	HS2	HS3	HSL	HD
Excess length	X	-	X	-	X	X	X	X	Available on request		X	X	X	X
Short stroke	X	X	X	X	X	X	X	X	X	X	X	X	X	X
Sealing air	X	X	X	X	X	-	-	-	Available on request		Available on request			X
Brake element	Available on request				X	Available on request			X	X	Available on request	X	X	Available on request
Angular gear	X	Available on request	X	Available on request	-	X	X	X	X	X	X	X	X	X
Additional slides	X	X	Available on request		X	Available on request				Available on request				
Special encoder	Available on request				X	Available on request	X	Available on request			Available on request			
Linear guideway with increased torque rigidity	X	X	Available on request		X	X	X	X	X	X	X	X	X	X
Adjustments to linear guideways	X	X	X	X	X	X	X	X	X	X	X	X	X	X
Reference switch	X	X	X	X	X	X	X	X	X	X	X	X	X	X
Remove the trim strip	X	X	X	X	X	X	X	X	X	X	X	X	X	X
Special motor adapter	X	X	X	X	-	X	X	X	X	X	X	X	X	X

Our application engineers will be happy to help you realise your adapted and customised linear axes and linear axis systems. Please contact us immediately: hx@hiwin.de

APPLICATIONS AND DOWNLOADS

CAD configurator



Sizing tool



Webshop



HIWIN GmbH
Brücklesbünd 1
77654 Offenburg
Germany

Fon +49 781 93278-0
Mail info@hiwin.de
Web hiwin.de/en